

Introduction to Health Services Planning



February 08, 2007

**Presentation to Contract Providers Quality
Practitioners Forum**

Presenter: Felicity Woodham
Programme Manager
Health Services Planning

Vision



- **To re-design health care with the patient**
- **To improve the health status of the people of Canterbury**
- **To take a new look at the entire health system**

Background

- **There are problems in the health services**
 - Silos
 - Time wasting
 - Complex
 - Fragmented
 - Duplication
- **With a budget of \$1 billion we need to use it better**
- **We need to plan better**
- **We need to involve everyone to get it right**

Background



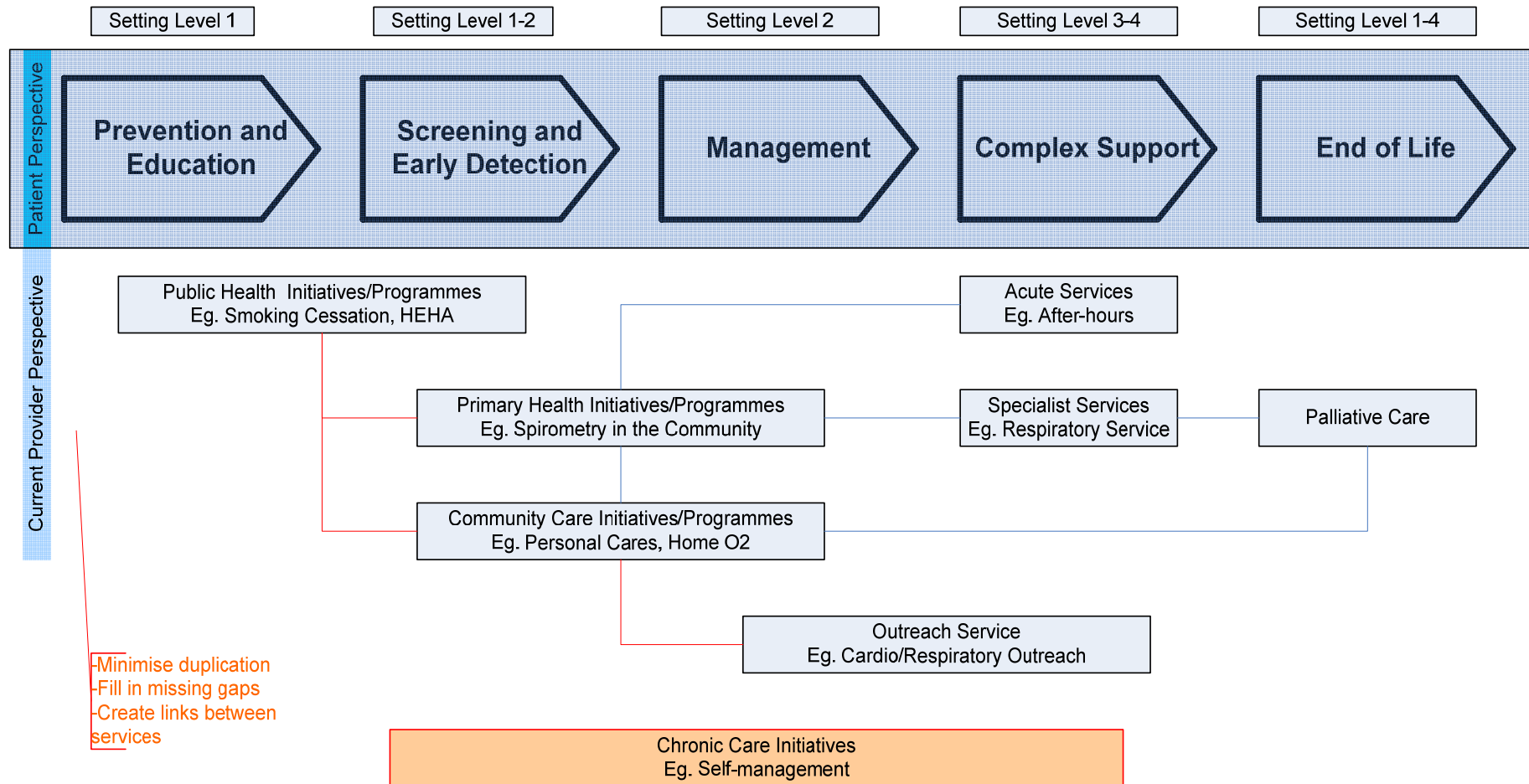
- **Canterbury Health Needs Assessment**
 - Growth of major chronic diseases
 - Growth of ageing population
- **Need for Prioritisation**
 - Population Based Funding (Funding from the Ministry of Health)
 - Investment planning
- **Planning within services at various stages**
 - Need for service providers to be better integrated
- **Canterbury DHB's Facilities Master Plan**
 - Form follows function

Objectives of Health Service Planning



- **Through participation of consumers and providers we need to:**
 - **Understand opportunities and challenges**
 - **Equity**
 - **Design and get agreement on models of care and service delivery that will work across the continuum of care**

Model of Care Diagram



Guiding Principles



Patient Led Planning

- Ensure quality, comprehensive, integrated healthcare services with a population health focus that aim to:
 - Improve the health status of our people
 - Understand and respond to current and future needs
 - Involve the patient and community
 - Be delivered from available resources

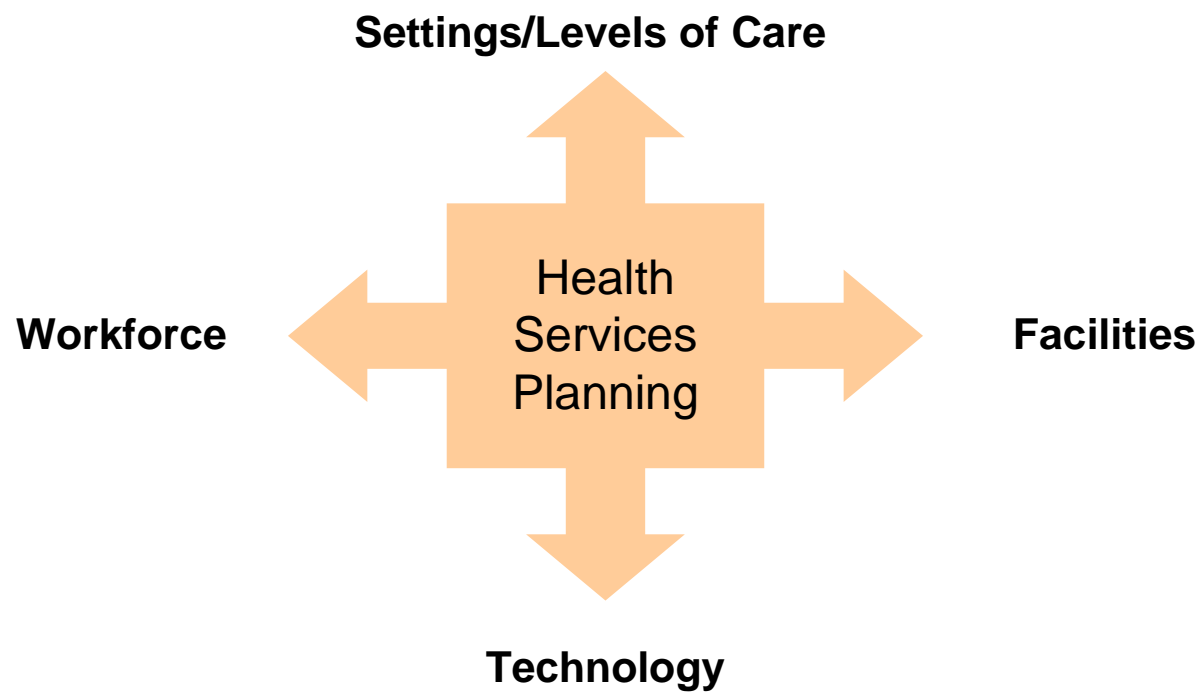
Guiding Principles



Responsibility, Accountability and Transparency

- Need to take a new look at the entire health system
- Investment (the dollars) in health services needs to be more efficient and effective
- Investment needs to be linked to patient outcomes
- Investment in health services includes facilities, workforce and technology
- Investment will need to be prioritised

Overview



Strategy



- **Need to involve everyone, including patients and the community**
- **Workshop**
 - identify opportunities to improve health service delivery and patient outcomes
 - develop a collaborative model of care/service delivery
- **Evaluate/analyse**
 - new model of care/service delivery model
 - identify impact on patient outcomes, facilities, workforce, investment/funding models
- **Deliver**
 - A strategic DHB-wide summary document

Key Support Developments



- **Consumer Reference Group**
 - How can we best involve patients/consumers?
 - Identify opportunities for patient/consumer participation to enhance the planning of health services
- **Combined Health Sector Dataset**
 - Combine a number of health data sources in Canterbury
 - Hold health interaction data ordered by the patients who take part
 - Carry each person's experience of the health sector
 - Comply with national standards regarding collection, storage and access of electronic patient information

Progress to date

- **Pilot areas**
 - Eye Health
 - Child Health
 - Kaikoura Community
 - Respiratory Health
- **Prioritisation of roll out**
 - Phase 1
 - Cardio vascular health
 - Diabetes
 - Cancers
 - Women's Health

Progress to date continued...

– Phase 2

- Musculoskeletal Health
- Neurological
- Older Person's Health

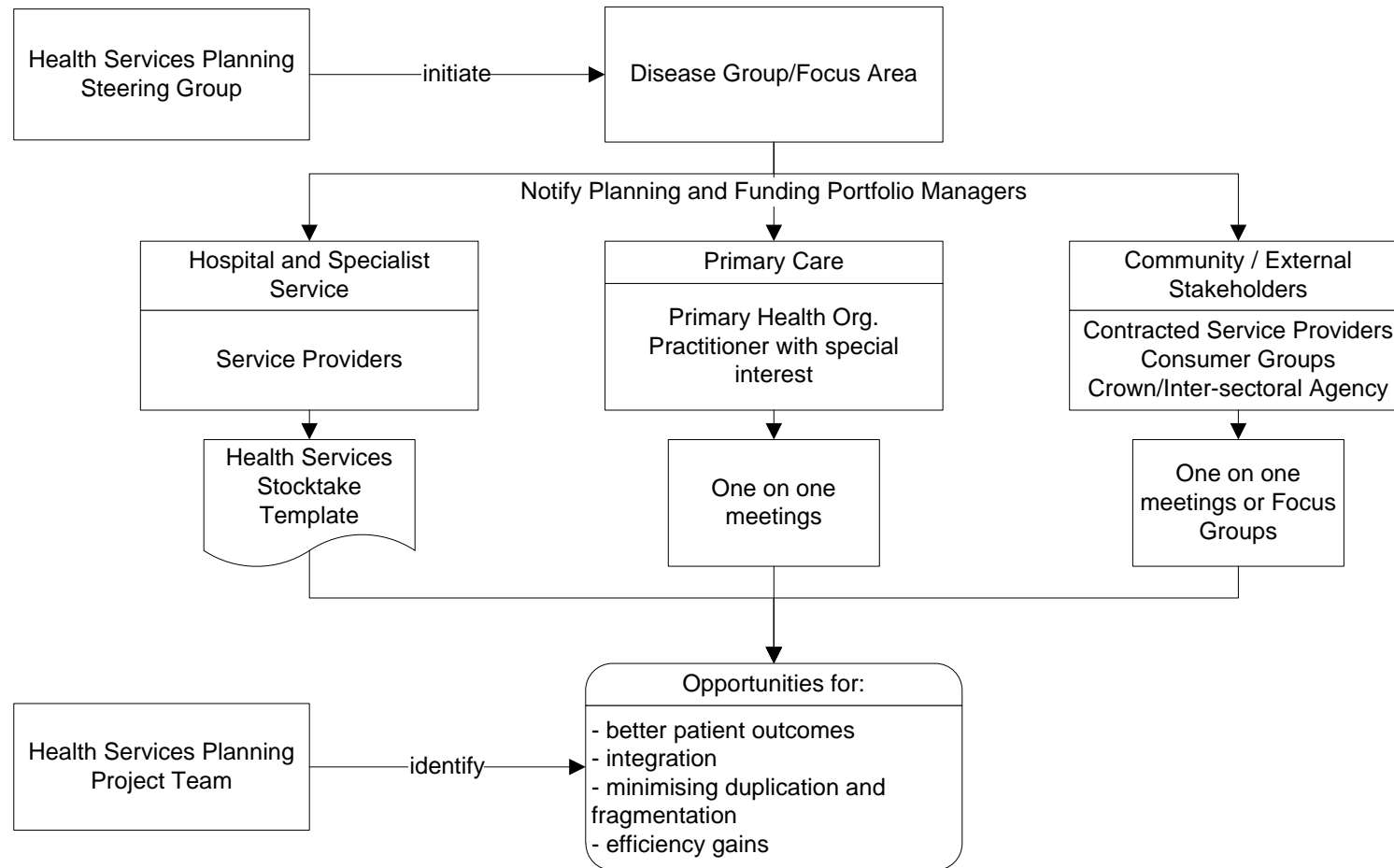
– Phase 3

- Consultancy services
- High specialisation services
- Acute services

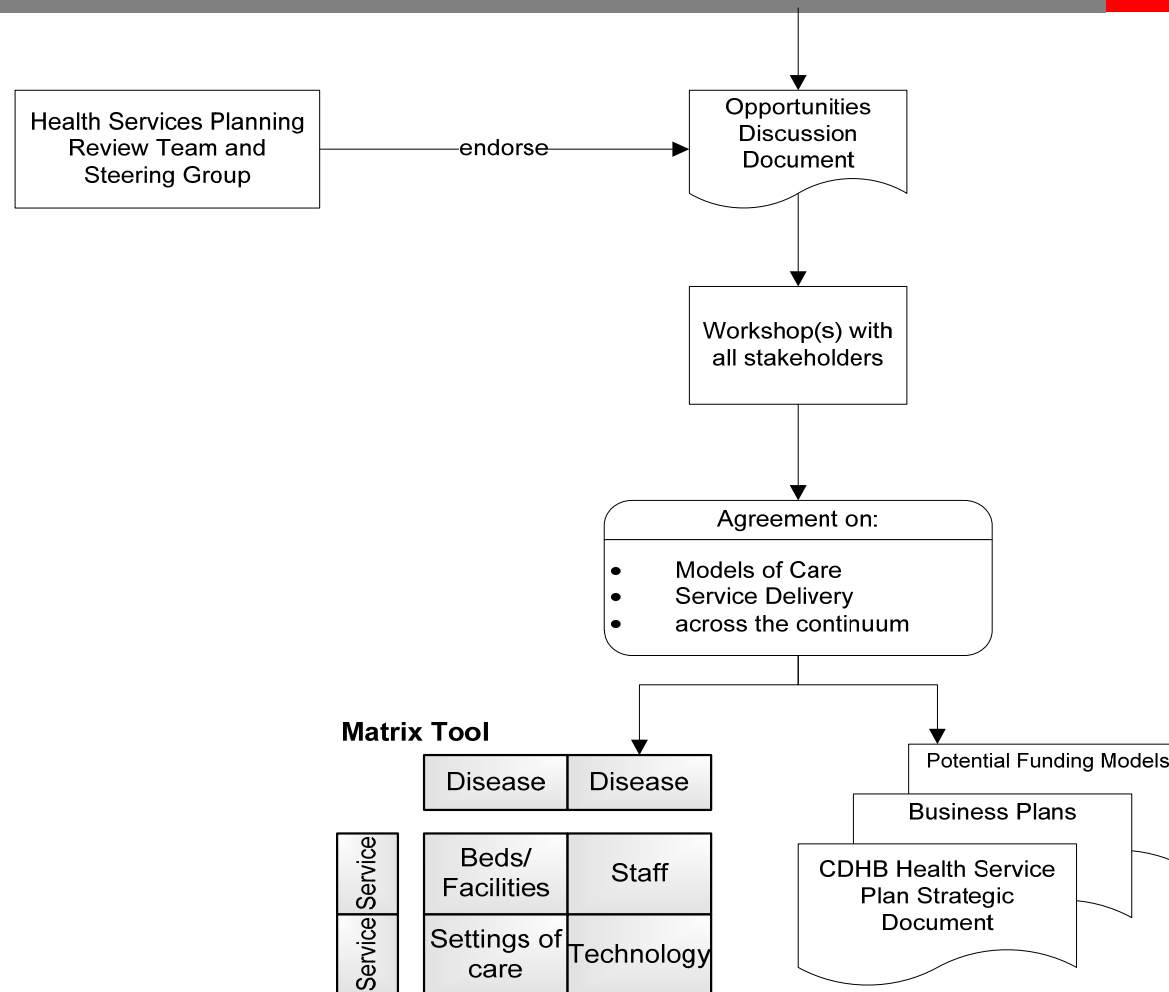
– Phase 4

- Mental Health
- Rural Health

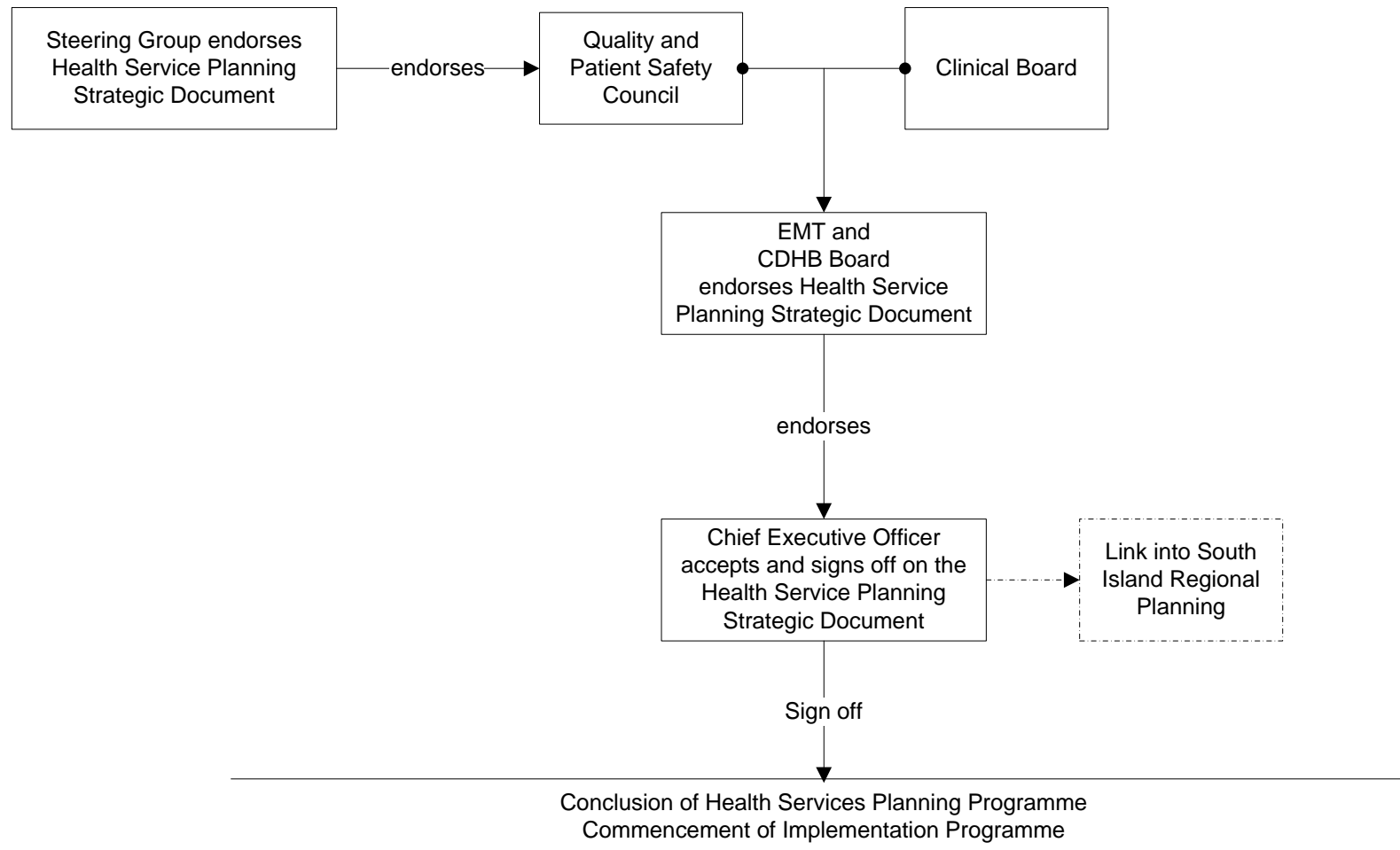
Planning Process



Planning Process Continued



Planning Process Continued



How to contact us:

- **Felicity**
 - 337 8647
- **Sue**
 - 364 4174
- **Naomi**
 - 337 8646

Email: healthservicesplanning@chdb.govt.nz

Or HSP@cdhb.govt.nz