

ASY-836.5: Testosterone implant protocol

ASY-836.6: Procedure

- a** Take blood for testosterone, SHBG and CBC prior to implant.
- b** Check patient's address, telephone number and GP details for any changes.
- c** Record patient details on implant list (see page)
- d** After 1st implant, patient to return for testosterone level at 3/12, 4/12 and possibly 5/12. Thereafter dose to be decided by Endocrinologist.

ASY-836.7: Sterile testosterone implant pack

- a** 1 large kidney dish
- b** 2 galley pots
- c** 1 pair toothed forceps
- d** 1 pair fine dissection forceps
- e** 1 needle holder
- f** 1 pair dressing scissors, blunt
- g** 2 dressing sheets

ASY-836.7.2: Extras

- a** Trocar and cannula
- b** Silk 2.0 with cutting needle, C E 6
- c** Disposable scalpel size 11
- d** 5 and 10 ml syringes
- e** Needle 2" gauge 22
- f** Chlorhexidine 0.5% in alcohol 70% skin antiseptic solution
- g** Sterile gloves
- h** Xylocaine 1% with adrenaline 5ml ampoule (1-2)
- i** Tegaderm transparent dressing
- j** Testosterone implants
- k** Sterile gauze squares
- l** Disposable razor
- m** Disposable blue drape

ASY-836.7.3: Take-home kit

- a** 1 sterile stitch cutter blade
- b** Tegaderm transparent dressing

ASY-836.8: Step by step testosterone implant guide

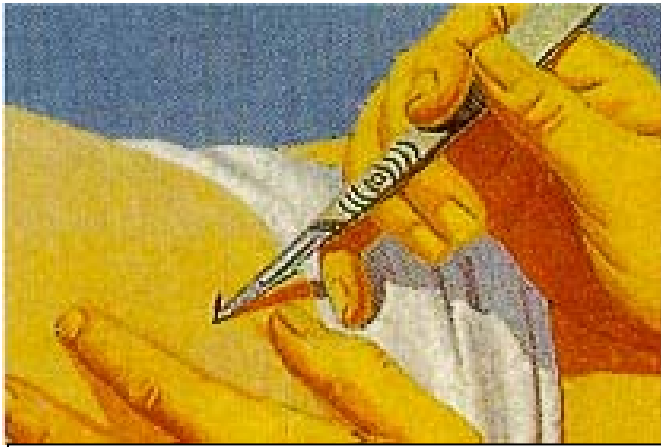


Figure 1 Administer local anaesthetic and then make a small cut in the skin on lower abdominal wall.

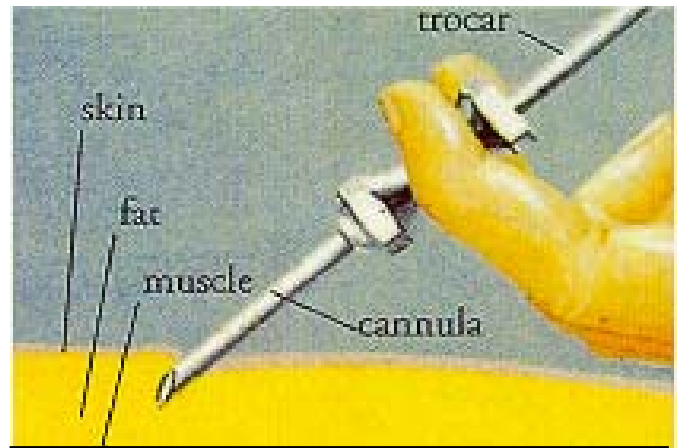


Figure 2. The trocar and cannula are used to make a “track” into which the implants are placed (some prefer to use forceps to make “track”).



Figure 3. The implant is pushed through the cannula into its track in the fat layer.

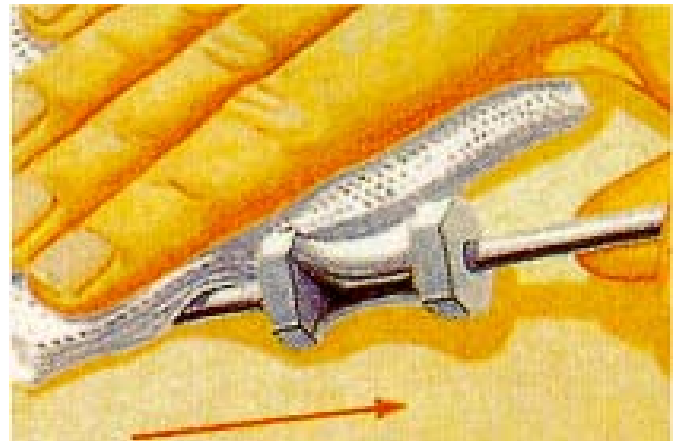


Figure 4. Pressure is applied after the obturator and cannula is withdrawn.

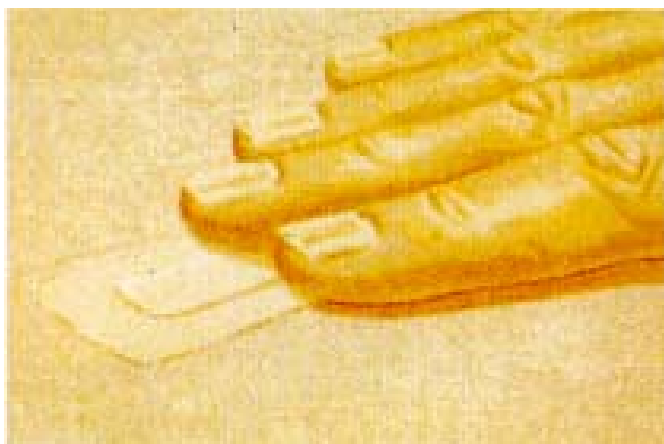


Figure 5. One suture and a small dressing is then placed over the wound.

